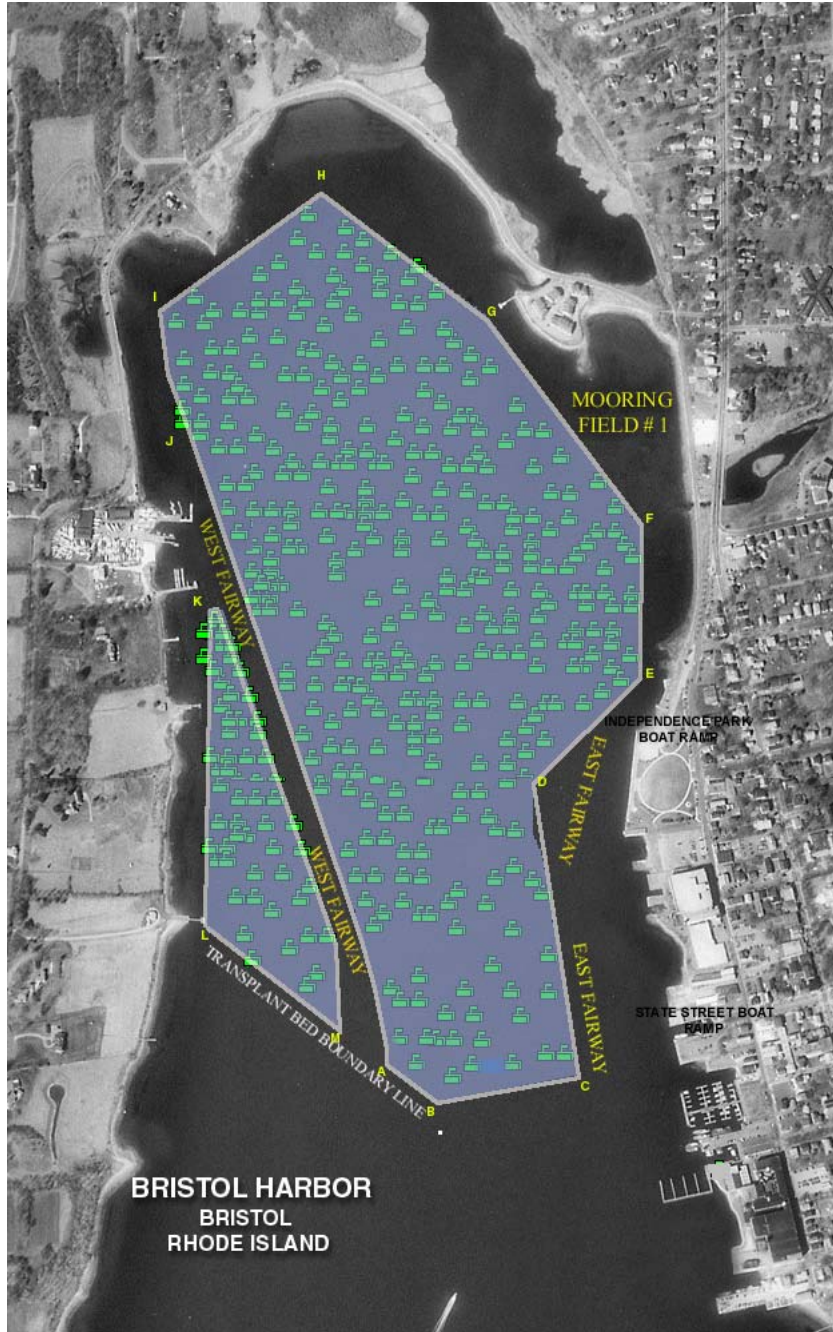


## APPENDIX G

### MOORING FIELD PERIMETER MAPPING

Note: All mooring areas in this Harbor Management Plan are administered by the Town of Bristol through the Office of the Harbormaster

# BRISTOL HARBOR



*MOORING FIELD 1- BRISTOL HARBOR*

**Total Moorings:** Approximately **491**

**Water Depth:** Average depth approximately 16 ft.

**Priority Use:** Recreational and Commercial Boating

**Swimming Areas:** none

**Mooring Field Status:** Waiting list in place at this time.

**Vessels over 25 feet:** Approximately 294 boats

**Mooring Boundaries: GPS Coordinates**

A. N 41.40.151 – W 71.17.125

B. N 41.40.093 – W 71.17.022

C. N 41.40.146 – W 71.16.836

D. N 41.40.391 – W 71.16.900

E. N 41.40.495 – W 71.16.789

F. N 41.40.616 – W 71.16.784

G. N 41.40.890 – W 71.17.148

H. N 41.40.772 – W 71.16.980

I. N 41.40.766 – W 71.17.320

J. N 41.40.677 – W 71.17.311

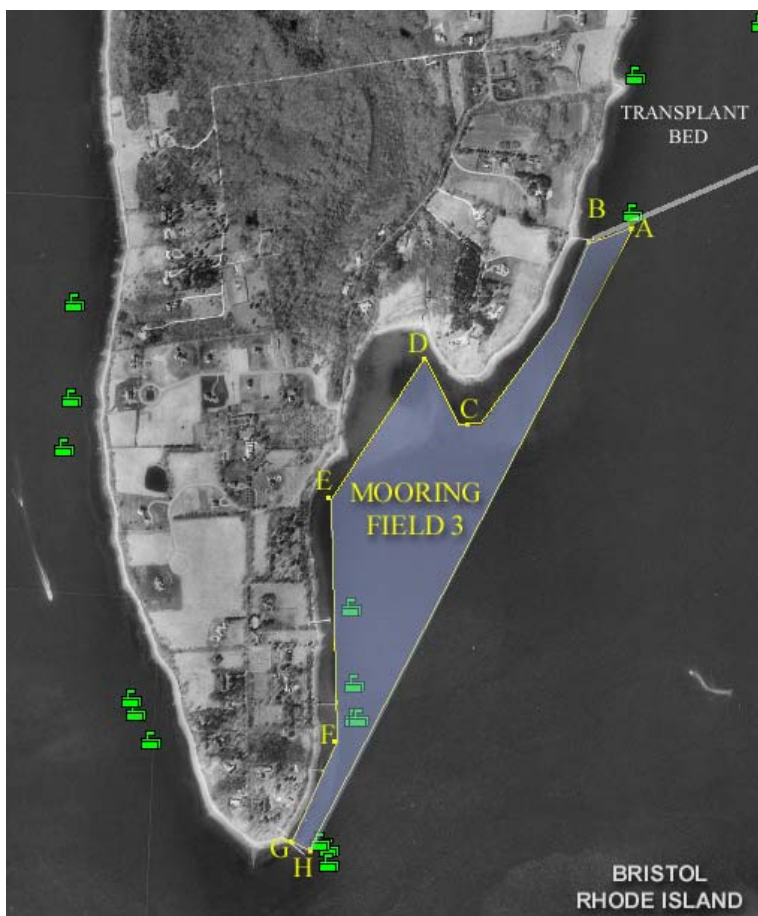
K. N 41.40.528 – W 71.17.289

L. N 41.40.268 – W 71.17.250

M. N 41.40.172 – W 71.17.096

**Insert New Walker's Cove Mooring Field Map**

## USHER'S COVE – TO BE ELIMINATED



**Total Moorings: 12**

**Water Depth:** Average depth approximately 8 ft.

**Priority Use:** Recreational Boating

**Swimming Areas:** none identified

**Mooring Field Status:** No waiting list in place at this time.

**Vessels over 25 feet:** Approximately 6 boats

**Mooring Boundaries: GPS Garmin V**

A. N 41.39.892 – W 71.17.233

B. N 41.39.848 – W 71.17.373

C. N 41.39.588 – W 71.17.613

D. N 41.39.675 – W 71.17.725

E. N 41.39.448 – W 71.17.860

F. N 41.39.114 – W 71.17.832

G. N 41.38.947 – W 71.17.905

H. N 41.38.921 – W 71.17.842

## THE HIGHLANDS



**Total Moorings: 37**

**Water Depth:** Average depth approximately 12 ft.

**Priority Use:** Recreational Boating

**Swimming Areas:** Bristol Town Beach

**Mooring Field Status:** No waiting list in place at this time.

**Vessels over 25 feet:** Approximately 11 boats

**Mooring Boundaries:** GPS Garmin V

A. N 41.41.313 – W 71.17.685

B. N 41.41.309 – W 71.17.734

C. N 41.41.610 – W 71.17.708

D. N 41.41.842 – W 71.17.638

E. N 41.42.296 – W 71.17.521

## CHURCH COVE – TO BE ELIMINATED



Total Moorings: 11

**Water Depth:** Average depth approximately 12 ft.

**Priority Use:** Recreational Boating

**Swimming Areas:** none identified

**Mooring Field Status:** No waiting list in place at this time.

**Vessels over 25 feet:** Approximately 2 boats

**Mooring Boundaries: GPS positions**

A. N 41.38.616 – W 71.15.376

B. N 41.39.624 – W 71.14.785

C. N 41.39.908 – W 71.14.382

D. N 41.40.052 – W 71.14.766

E. N 41.39.826 – W 71.15.058

F. N 41.39.556 – W 71.15.189

G. N 41.39.092 – W 71.15.269

H. N 41.38.666 – W 71.15.485

## HOPEWORTH



**Total Moorings: 21**

**Water Depth:** Average depth approximately 11 ft.

**Priority Use:** Recreational Boating

**Swimming Areas:** The TeePees and Hopeworth Association

**Mooring Field Status:** No waiting list in place at this time.

**Vessels over 25 feet:** Approximately 7 boats

**Mooring Boundaries: GPS positions**

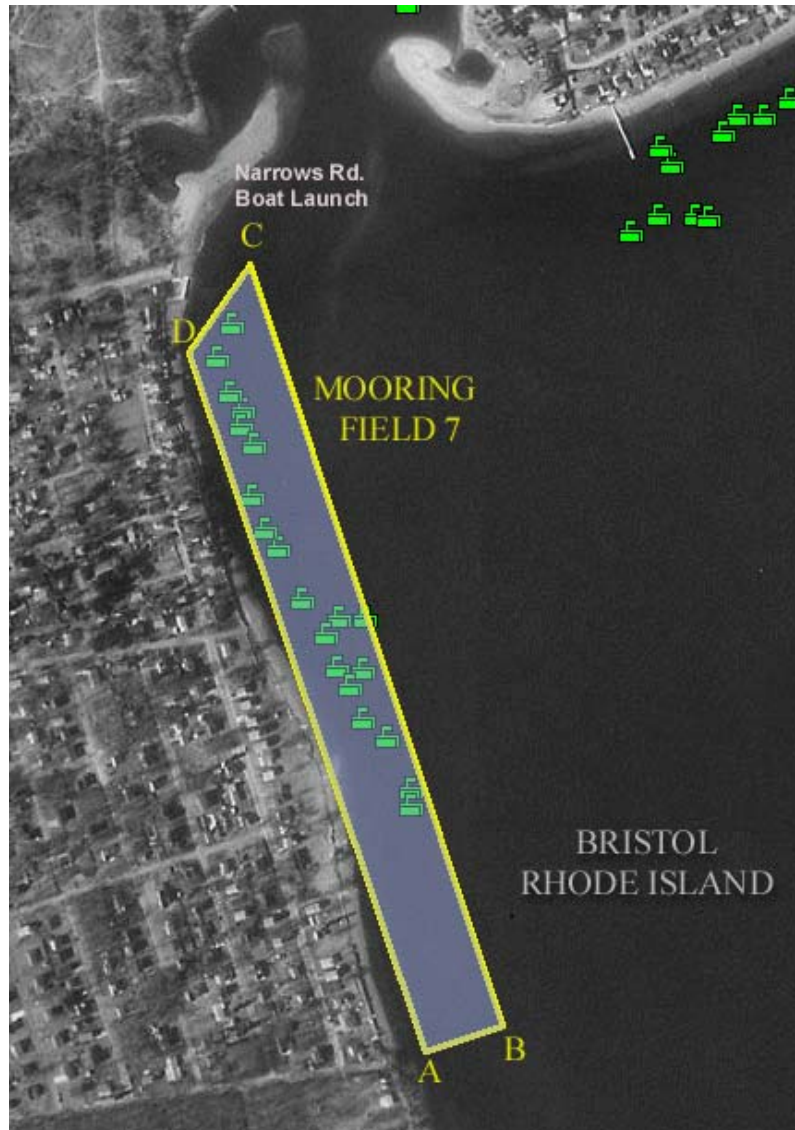
A. N 41.41.789 – W 71.14.759

B. N 41.41.797 – W 71.14.708

C. N 41.41.487 – W 71.14.532

D. N 41.41.480 – W 71.14.598

## THE NARROWS



**Total Moorings: 31**

**Water Depth:** Average depth approximately 11 ft.

**Priority Use:** Recreational Boating

**Swimming Areas:** none identified

**Mooring Field Status:** No waiting list in place at this time.

**Vessels over 25 feet:** Approximately 12 boats

**Mooring Boundaries: GPS Garmin V**

A. N 41.41.350 – W 71.14.555

B. N 41.41.362 – W 71.14.485

C. N 41.41.797 – W 71.14.715

D. N 41.41.764 – W 71.14.761

## KICKEMUIT SOUTH



**Total Moorings: 53**

**Water Depth:** Average depth approximately 8 ft.

**Priority Use:** Recreational Boating / No Commercial Moorings

**Swimming Areas:** private

**Mooring Field Status:** Waiting list in place at this time.

**Vessels over 25 feet:** Approximately 21 boats

**Mooring Boundaries: GPS Garmin V**

A. N 41.42.053 W 71.14.797

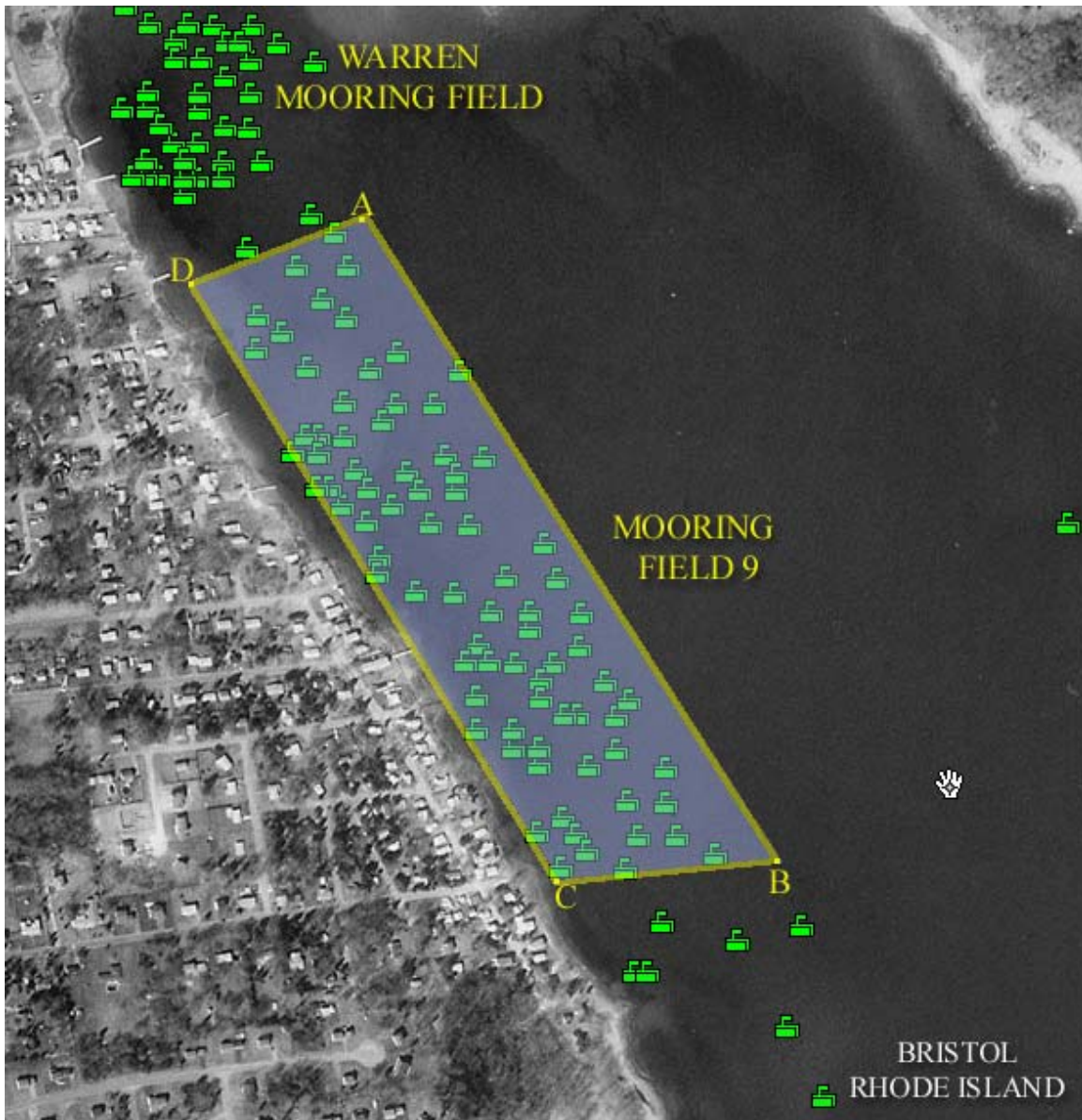
B. N 41.42.081 W 71.14.703

C. N 41.42.346 W 71.14.871

D. N 41.42.313 W 71.14.998

E. N 41.42.104 W 71.14.893

## KICKEMUIT NORTH



**Total Moorings: 89**

**Water Depth:** Average depth approximately 8 ft.

**Priority Use:** Recreational Boating

**Swimming Areas:** none identified

**Mooring Field Status:** Waiting list in place at this time.

**Vessels over 25 feet:** Approximately 47 boats

**Mooring Boundaries: GPS Latitude and Longitude**

A. N 41.42.924 W 71.15.350

B. N 41.42.547 W 71.15.025

C. N 41.42.532 W 71.15.179

D. N 41.42.879 W 71.15.478