



APPENDIX G
MOORING FIELD PERIMETER MAPPING

Note: All mooring areas in this Harbor Management Plan are administered by the Town of Bristol through the Office of the Harbormaster



MOORING FIELD 1

Town Beach North



Total Moorings: Approx 48
Water Depth: Average depth approximately 12 ft.
Priority Use: Recreational Boating
Swimming Areas: Bristol Town Beach
Mooring Field Status: No waiting list in place at this time.
Vessels over 25 feet: Approximately 29 boats
Mooring Boundaries: GPS Garmin V

A.	41.41.19.65N	-	071.17.34.91W
B.	41.41.18.61N	-	071.17.47.93W
C.	41.41.35.23N	-	071.17.34.89W
D.	41.41.35.75N	-	071.17.48.24W
E.	41.41.53.98N	-	071.17.33.87W
F.	41.41.54.27N	-	071.17.47.12W
G.	41.42.31.30N	-	071.17.29.83W
H.	41.42.30.97N	-	071.17.36.50W



MOORING FIELD 2 BRISTOL HARBOR



Total Moorings: Apprx 491-Maximum 525
Water Depth: Average depth approximately 16 ft.
Priority Use: Recreational and Commercial Boating
Swimming Areas: none
Mooring Field Status: Waiting list in place at this time
Vessels over 25 feet: Approximately 294 boats
Mooring Boundaries: GPS Coordinates

- A. N 41.40.151 – W 71.17.125
- B. N 41.40.093 – W 71.17.022
- C. N 41.40.146 – W 71.16.836
- D. N 41.40.391 – W 71.16.900
- E. N 41.40.495 – W 71.16.789
- F. N 41.40.616 – W 71.16.784
- G. N 41.40.890 – W 71.17.148
- H. N 41.40.772 – W 71.16.980
- I. N 41.40.766 – W 71.17.320
- J. N 41.40.677 – W 71.17.311
- K. N 41.40.528 – W 71.17.289
- L. N 41.40.268 – W 71.17.250
- M. N 41.40.172 – W 71.17.096



MOORING FIELD 3

USCG South / Walker's Cove



Total Moorings: Approx - 82

Water Depth: Average depth approximately 23 ft.
Priority Use: Recreational and Commercial Boating

Swimming Areas: none

Mooring Field Status: Currently no waiting

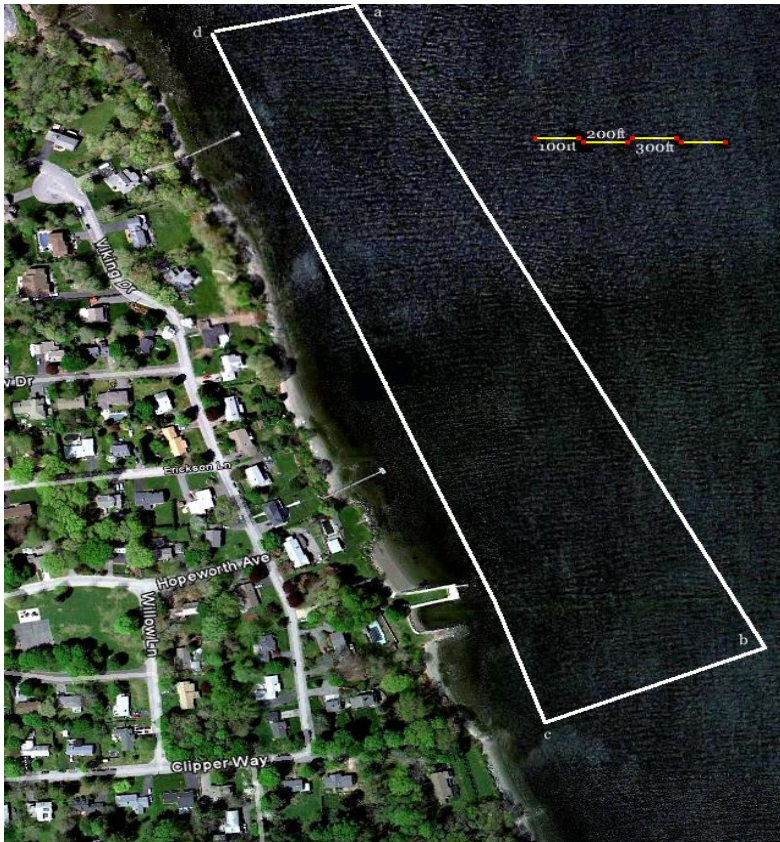
Vessels over 25 feet: Approximately 43 boats

Mooring Boundaries: Google Earth GPS

- A. 41.39.56.78N - 071.17.41.71W
- B. 41.39.57.87N - 071.16.37.01W
- C. 41.39.52.76N - 071.16.30.96W
- D. 41.39.45.76N - 071.16.26.44W
- E. 41.39.44.92N - 071.16.28.29W
- F. 41.39.43.66N - 071.16.27.26W
- G. 41.39.45.27N - 071.16.23.32W
- H. 41.39.38.70N - 071.16.19.45W
- I. 41.39.39.78N - 071.16.16.87W
- J. 41.39.38.99N - 071.16.13.59W
- K. 41.39.35.78N - 071.16.10.44W
- L. 41.39.31.71N - 071.16.06.93W
- M. 41.39.33.51N - 071.16.13.55W
- N. 41.39.33.31N - 071.16.17.81W
- O. 41.39.26.77N - 071.16.14.18W
- P. 41.39.26.39N - 071.16.09.46W
- Q. 41.39.22.18N - 071.16.08.35W
- R. 41.39.18.12N - 071.16.12.96W
- S. 41.39.14.35N - 071.16.16.42W
- T. 41.39.09.40N - 071.16.23.88W
- U. 41.39.26.15N - 071.16.34.43W



MOORING FIELD 4 HOPEWORTH MOORING FIELD



Total Moorings: 29

Water Depth: Average depth approx 11 ft.

Priority Use: Recreational Boating

Swimming Areas: The “Tee Pees” and Hopeworth Association

Mooring Field Status: No waiting list in place at this time.

Vessels over 25 feet: Approximately 11 boats

Mooring Boundaries: GPS positions

A. N 41.41.789 – W 71.14.759

B. N 41.41.797 – W 71.14.708

C. N 41.41.487 – W 71.14.532

D. N 41.41.480 – W 71.14.598



MOORING FIELD 5 King Philip Avenue



Total Moorings: 38

Water Depth: Average depth approx 11 ft.

Priority Use: Recreational Boating

Swimming Areas: none identified

Mooring Field Status: No waiting list

Vessels over 25 feet: Approximately 19 boats

Mooring Boundaries: GPS Garmin V

A. 41.41.49.19N 071.14.44.79W

B. 41.41.49.69N 071.14.41.85W

C. 41.41.33.68N 071.14.28.93W

D. 41.41.22.48N 071.14.25.26W

E. 41.41.33.44N 071.14.29.21W

F. 41.41.39.91N 071.14.37.86W

G. 41.41.44.16N 071.14.44.86W



MOORING FIELD 6



Smith Street / Kickemuit South

Total Moorings: 58
Water Depth: Average depth approx 6 ft.
Priority Use: Recreational Boating
Swimming Areas: private
Moorings Field Status: Waiting list in place
Vessels over 25 feet: Approx 29 boats
No Commercial Moorings Permitted
Moorings Boundaries: GPS Garmin V

A. 41.42.19.73N 071.15.01.89W
B. 41.42.21.43N 071.14.51.23W
C. 41.42.05.23N 071.14.41.40W
D. 41.42.03.78N 071.14.48.50W
E. 41.42.13.22N 071.14.53.92W

To



MOORING FIELD 7 Sherman Avenue North to the Warren Town Line



Total Moorings: 94
Water Depth: Average depth approx 8 ft.
Priority Use: Recreational Boating
Swimming Areas: none identified
Mooring Field Status: Waiting list in place at this time.
Vessels over 25 feet: Approximately 55 boats
No Commercial Moorings Permitted
Mooring Boundaries: GPS - Google Earth
A. 41.42.52.25N 071.15.28.80W
B. 41.42.54.54N 071.15.20.42W
C. 41.42.46.12N 071.15.12.05W
D. 41.42.34.75N 071.15.03.26W
E. 41.42.32.27N 071.15.11.62W
F. 41.42.42.91N 071.15.19.94W